

ProStage II Pyrotechnics



ProStage II is our professional range of pyrotechnics. ProStage II pyrotechnics do not plug into our PyroFlash pods; instead the effects have wires for connecting to pyro circuits. Our ProStage II pyrotechnics were developed using modern day techniques.

- ProStage II Pyrotechnics are designed for professional users over the age of 18 years old.
- It is important to remember that the use of pyrotechnics, indoors and outdoors, is at the sole discretion of the operator, who will have taken full note of the prevailing situation.

Operators are warned that pyrotechnic devices can sometimes vary in their performance and no guarantee is given that every device will perform exactly the same. This must be borne in mind when siting devices.

- We are often asked what is a safe distance from an effect, or what is the safe working height. As every situation is different it is impossible to give any definitive solution. What is required is a profound knowledge of the product being used, matched with a proper risk assessment. If the product is new to the user it should be observed in a safe outdoor location, so that the effect can be fully ascertained before being used indoors.
- ProStage II must only be used with firing systems that are either designed for the purpose by the company, or have written approval from the company. No liability of any sort will be processed where ProStage II has been used with unapproved firing systems.

ProStage II Stage Gerbs

The ProStage II range of professional **Stage Gerbs** are identified by the burn time in seconds (first number) x the height in feet (second number).

For example: a **1/4 x 20** is a gerb of 1/4 of a second duration that reaches a height of 20ft.

Heights are also given in metres.

ProStage II has probably the largest list of stock stage gerbs of any manufacturer. Most items will be off the shelf, but some will be subject to minimum order quantities and lead times.

All our Stage Gerbs are boxed in 10s.

Most Stage Gerbs are also available in bulk quantities of 250, with igniters.

Only 1/4 x 6 to 1 x 25 Stage Gerbs are fitted with igniters.

Please note:

The height of a gerb is defined as the height to the top of the main plume, some sparks will go higher.



DURATION: as specified (see page 10)
FALLOUT: cold



Visit our website to view this effect in action.



www.lemaitreltd.com



info@lemaitreltd.com

Product codes: (tens)

1/4 x 6 (or 1/4 x 1.8m) Stage Gerb **PP021**
 1/4 x 12 (or 1/4 x 3.6m) Stage Gerb **PP013**
 1/4 x 20 (or 1/4 x 6m) Stage Gerb **PP014**

1/2 x 6 (or 1/2 x 1.8m) Stage Gerb **PP015**
 1/2 x 8 (or 1/2 x 2.4m) Stage Gerb **PP451**
 1/2 x 12 (or 1/2 x 3.6m) Stage Gerb **PP016**
 1/2 x 15 (or 1/2 x 4.5m) Stage Gerb **PP038**
 1/2 x 20 (or 1/2 x 6m) Stage Gerb **PP017**

1 x 15 (or 1 x 4.5m) Stage Gerb **PP058**
 1 x 20 (or 1 x 6m) Stage Gerb **PP059**
 1 x 25 (or 1 x 7.5m) Stage Gerb **PP351**
 1 x 35 (or 1 x 10.5m) Stage Gerb **PP366**
 1 x 50 (or 1 x 15m) Stage Gerb **PP436** **NEW!**

3 x 6 (or 3 x 1.8m) Stage Gerb **PP018**
 3 x 12 (or 3 x 3.6m) Stage Gerb **PP338**
 3 x 20 (or 3 x 6m) Stage Gerb **PP039**

6 x 6 (or 6 x 1.8m) Stage Gerb **PP019**
 6 x 12 (or 6 x 3.6m) Stage Gerb **PP339**
 6 x 20 (or 6 x 6m) Stage Gerb **PP049**



Gerb fan

8 x 8 (or 8 x 2.4m) Stage Gerb **PP020**

10 x 6 (or 10 x 1.8m) Stage Gerb **PP341**
 10 x 10 (or 10 x 3m) Stage Gerb **PP022**
 10 x 12 (or 10 x 3.6m) Stage Gerb **PP033**
 10 x 15 (or 10 x 4.5m) Stage Gerb **PP023**
 10 x 20 (or 10 x 6m) Stage Gerb **PP050**

12 x 6 (or 12 x 1.8m) Stage Gerb **PP340**
 12 x 12 (or 12 x 3.6m) Stage Gerb **PP036**
 12 x 15 (or 12 x 4.5m) Stage Gerb **PP024**

15 x 15 (or 15 x 4.5m) Stage Gerb **PP025**
 15 x 20 (or 15 x 6m) Stage Gerb **PP051**

20 x 20 (or 20 x 6m) Stage Gerb **PP052**

6 x 6 (6 x 1.8m) **Gold** Stage Gerb **PP370**
 10 x 12 (10 x 3.6m) **Gold** Stage Gerb **PP371**



+ 44 (0) 20 8646 2222

Please note that the red caps are no longer fitted or supplied with our Stage Gerbs. If required, these can be sent out at no additional charge AT THE TIME OF PLACING THE ORDER. However, should these red caps be needed without the Stage Gerbs, they are available to purchase.

ProStage II Gerb Holders

A range of robust holders for use with all ProStage II Stage Gerbs. For floor or truss mount.

All gerb holders are available in 2 sizes: the 18mm holder for 17mm Gerbs and the 25mm holder for 24mm Gerbs.

90-degree Gerb Holder (for floor mount)

PP105 (18mm)
 PP111 (25mm)



60-degree Gerb Holder (for floor mount)

PP107 (18mm)
 PP112 (25mm)



3-way Array Plate
(for floor or truss mount)
 PP103 (18mm)
 PP109 (25mm)



Single Gerb Holder (for truss mount)

PP104 (18mm)
 PP114 (25mm)



45-degree Gerb Holder (for floor mount)

PP108 (18mm)
 PP113 (25mm)

Other types of holders are available; please visit our website for further information.

Please check with the Sales office to ensure you order the correct size holders for your gerbs.



www.lemaitreltd.com



info@lemaitreltd.com

Waterfalls

Waterfalls are a speciality of ProStage II. These are specific Waterfall effects and should not be confused with upside down Gerbs or a typical firework waterfall stick.

Traditionally there have been two types of waterfall: an inverted gerb giving a rushing effect, **or** the archetypal waterfall with a large choke producing a liquid water effect but with a huge amount of very hot fallout hitting the floor.

ProStage II Waterfalls use a new type of choke that gives the best of both effects without the tubes catching fire. A gentle Waterfall effect which is much cleaner than traditional waterfalls.

Please note that the red caps are no longer fitted or supplied with our Waterfalls. If required, these can be sent out at no additional charge **AT THE TIME OF PLACING THE ORDER**. However, should these red caps be needed without the Waterfalls, they are available to purchase.

DURATION: as specified
FALLOUT: hot



Product codes: (tens)
10 x 8 (or 10 x 2.4m) Waterfall **PP364**
15 x 15 (or 15 x 4.5m) Waterfall **PP357**
20 x 20 (or 20 x 6m) Waterfall **PP358**



DURATION: as specified
FALLOUT: hot



Silver Cascades

Our silver cascades are similar to our waterfalls but the whole effect is denser. They only need to be positioned 7.5 cm apart to create a much fuller effect than our waterfalls.

Our silver cascades are therefore a cheaper option, as you don't need as many as when using our waterfalls. Much fuller effect which looks similar to an inverted Gerb.

Please note that the red caps are no longer fitted or supplied with our Silver Cascades. If required, these can be sent out at no additional charge **AT THE TIME OF PLACING THE ORDER**. However, should these red caps be needed without the Silver Cascades, they are available to purchase.

Product codes: (tens)
6 x 8 (or 6 x 2.4m) Silver Cascade **PP452**
10 x 8 (or 10 x 2.4m) Silver Cascade **PP415**
15 x 15 (or 15 x 4.5m) Silver Cascade **PP416**
20 x 20 (or 20 x 6m) Silver Cascade **PP417**

4oz Gerb

These 1 inch Gerbs produce a dramatic spray of sparks to a height of approximately **4.5 metres**, for a duration of 25 to 30 seconds.

4oz and **8oz** Gerbs are the largest of the Stage Gerbs in the ProStage II range. The plume of sparks is wider than that of normal gerbs, producing more of a Christmas Tree shape. This means that there will be hot fallout associated with these effects and they are recommended for use in large venues only.

ProStage Holders are available for use with these gerbs.



Product codes: (each)
1602: 4oz Gerb Silver
1602F: 4oz Flitter Gerb
1602S: 4oz Shimmer Gerb
1603: 4oz Gerb Gold
1604: 4oz Gerb Gold to Silver
1606: 8oz Gerb Silver
1606F: 8oz Flitter Gerb
1606S: 8oz Shimmer Gerb
1607: 8oz Gerb Gold
1608: 8oz Gerb Gold to Silver

8oz Gerb

These 1.5 inch Gerbs produce a dramatic spray of sparks to a height of approximately **6 metres**, for a duration of 25 to 30 seconds.

4oz and **8oz** Gerbs are available in: **Gold, Silver, Colour Change (from gold to silver), Flitter, and Shimmer.**

DURATION: 25 to 30 seconds
FALLOUT: hot



ProStage II Stage Mines

The ProStage II **Stage Mines** propel a fantastic shower of coloured stars with or without a silver Tail. Minimal noise, but some smoke.

Stage Mines are made in two sizes:

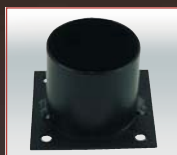
- 10ft (or Micro Mine) which reaches a height of approximately 10ft (3m) and so is suitable for smaller venues.
- 50ft (or Medium Mine) requiring a clearance height of 50ft (15m)

Available in:

- 10ft in Red, Green, Amber and White.
- 50ft Mines in Red, Green, Amber, Red with tail, Green with tail and Amber with Tail

ProStage II Mine Holders are available in:

- Single (Small and Medium sizes)
- 90 degree (Small and Medium sizes)
- 3-way Array Plates (Small and Medium sizes)



Please refer to our price list or website for the ProStage II Stage Mines codes.



20ft and 25/30ft Star Mines

The **20ft** and **25/30ft Mines** propel a small number of stars in a very tight formation and have much brighter colours than our Stage Mines. The **20ft** and **25/30ft Mines** all extinguish simultaneously and hold their shape for the entire duration of the effect.

The **20ft Mines** are available in Amber, Green, Red, White, Shimmer, Flitter, Yellow and Orange.

The **25/30ft Mines** are available, **without Tail**, in Amber, Green, Red, White, Yellow, Orange, Blue, Flitter, Silver, Crackle, Shimmer and Gold Glitter. They also come **with Tail** in Red, Amber, Green, Yellow and Orange.

Please refer to our price list or website for the codes of the **20ft** and **25/30ft** Star Mines.



50ft Red Mine



25ft Blue Star Mine



10ft Amber Mine



Visit our website to view these effects in action.

DURATION: instant
FALLOUT: cold

20ft and 25/30ft Bicoloured and Tricoloured Mines

The effect produced from this mine is up to you! Just Pick 'n' Mix your effects!

You can choose any TWO colours from the existing range i.e. Amber, Blue, Crackle, Flitter, Green, Glitter, Orange, Red, Shimmer, Silver, White, Yellow, Amber & Tail, Green & Tail, Orange & Tail, Red & Tail and Yellow & Tail.

In addition, a **Red, White and Blue Mine (Tricoloured)** is also available.

The Bicoloured and Tricoloured Mines are sold under the codes **PP560** (20ft Mine) and **PP529** (25/30ft Mine), and you **MUST** specify your choice of colours when ordering them.

We stock the Red, White and Blue Mines, but not the Bicoloured Mines, which will take approximately two to three weeks to make from receiving the order.



Green & Yellow Bicoloured Mine

DURATION: instant
FALLOUT: cold



Visit our website to download our MSDS and COSHH for each of our products.



Visit our website to view this effect in action.



Visit our website to view this effect in action.

Flash Tubes

Also known as Split Mines or Flash Curtains, this effect is in a 6" long tube that has a split along its length covered by a thin paper membrane.

Flash tubes can be attached to the floor for a spectacular fan shaped effect that reaches approximately 4.5 metres.

Available in:

Silver Crackle, Gold Glitter, Gold, Green, Red, Silver, Silver Glitter and Silver Wave.



Flash tubes must be used with the correct holder.

Product codes: (each)

- PP006SC: 6" Silver Crackle Flash Tube
- PP026: 6" Gold Glitter Flash Tube
- PP027: 6" Gold Flash Tube
- PP028: 6" Green Flash Tube
- PP029: 6" Red Flash Tube
- PP030: 6" Silver Flash Tube
- PP031: 6" Silver Glitter Flash Tube
- PP037: 6" Silver Wave Split Mine
- PP100: Flash Tube Holder



DURATION: instant
FALLOUT: hot

ProStage II Flashes

ProStage II **Flashes** are coloured flashes which are fired by igniter wires. They produce a bright flash of coloured light with a small puff of smoke and a small report.

ProStage II Flashes come in Small and Arena sizes.

The Small Flash reaches a height of approximately 2ft or 0.6m, and the Arena Flash reaches a height of approximately 8ft or 2.5m.

ProStage II Flashes are available in Red, Green, White and Amber.

Product codes: (tens)

- PP359: Red Flash - Small
- PP360: Green Flash - Small
- PP361: Amber Flash - Small
- PP362: White Flash - Small

Product codes: (for two)

- PP405: Red Flash - Arena
- PP406: Green Flash - Arena
- PP407: White Flash - Arena
- PP411: Amber Flash - Arena



DURATION: instant
FALLOUT: cold



Visit our website to view this effect in action.

Robotics

Also known as Electric Fault Simulators, Robotics are used in film and TV to reproduce electrical faults in fuse boxes and other equipment.

A small flash is followed by a shower of silver sparks.

Available in small, medium or large to suit the application.

Product codes: (a dozen)

- P503: Small Robotics
- P504: Medium Robotics
- P505: Large Robotics



DURATION: instant
FALLOUT: possible, depends on positioning and orientation when fired.



DURATION: instant
FALLOUT: none

Gunflash

Used to create a realistic simulation of a gun being fired when inserted into the barrel.

A small orange flash, a silver spark and a little smoke.

The large version also produces a report and has an option with sparkle.

Tube dimension: 9mm diameter by 35mm in length.

Product codes:

- 1227C: Gunflash (12)
- 1227CH: Gunflash on Harness (Special order ONLY)
- PP208: Large Gunflash (20)
- PP243: Large Gunflash with Sparkle (20)



www.lemaitreltd.com



info@lemaitreltd.com

5-second White Smoke

Le Maitre 5-second White Smoke was originally produced for Beauty and the Beast for use as a "Smoking Pants" device.

It's a 50mm long tube, about 17mm diameter, has a fitted igniter and, when fired, produces a stream of white coloured smoke for around 5 seconds.

Product code: BB404 (box of ten)

DURATION: 5 seconds

FALLOUT: none



ProStage II Flames

ProStage II **Flames** have been used on productions such as **The Phantom of the Opera** and huge tours like **The Rolling Stones**, and more recently seen on the **Slipknot Tour** and at the **Harry Potter** premiere. The effect is stunning and produces a tiny amount of smoke with no fallout.

The Medium, Intermediate and Large flame projectors are available with or without a wooden base. The ones with wooden base can be re-used in conjunction with the flame refills (1719AR). The ones without the wooden base **MUST** be used with a ProStage II Flame Holder and can only be used once.

It is very important to use the correct holder with these devices (PP124).

Small Flame Projector

A column of orange flame with an intense heat, that reaches a height of approximately 2 metres.

The duration is 1 to 2 seconds.

Product code: (each)
PP032

DURATION: 1 to 2 seconds
FALLOUT: none

Intermediate Flame Projector

A column of orange flame with an intense heat, that reaches a height of approximately 3 metres.

The duration is 2 to 3 seconds.

Product codes: (each)

PP069

PP349 (Red Flame)

PP346 (Green Flame)

1719A (with wooden base)

1719ARE (Red Flame - with wooden base)

1719AG (Green Flame - with wooden base)

1719AR (Refill)

DURATION: 2 to 3 seconds

FALLOUT: none



Medium Flame Projector

A column of orange flame with an intense heat, that reaches a height of approximately 3 metres.

The duration is approximately 2 seconds.

Product codes: (each)

PP068

PP348 (Red Flame)

PP345 (Green Flame)

1719 (with wooden base)

1719RE (Red Flame - with wooden base)

1719R (Refill)

DURATION: 2 seconds

FALLOUT: none



Large Flame Projector

A column of orange flame with an intense heat, that reaches a height of approximately 3 metres.

The duration is 3 to 4 seconds.

Product codes: (each)

PP070

PP350 (Red Flame)

PP347 (Green Flame)

1720 (with wooden base)

1720RE (Red Flame - with wooden base)

1720GR (Green Flame - with wooden base)

1720R (Refill)

DURATION: 3 to 4 seconds

FALLOUT: none

Coloured Flame Projectors

Flames can be coloured in red or green, as well as orange. This involves an additive, which can change the duration of the effect and is sometimes accompanied by a distinctive smell.

Flash Flame

A column of orange flame preloaded with white sparkle.

It reaches a height of approximately 2 metres, for a duration of approximately 1 second.

Product code: PP053 (each)

DURATION: 1 to 2 seconds
FALLOUT: none



Visit our website to view all these effects in action.

Airbursts

Airbursts are designed to be suspended from a lighting truss that is at least 6 (small airburst) to 8 (large airburst) metres above the ground.

They produce a bright flash and spherical burst of dazzling sparks with no hot fallout.



Visit our website to view this effect in action.

DURATION: instant
FALLOUT: none

ProStage II has led in the production of ready to use airbursts and offers an enormous selection. Airbursts come both singly or in a three drop harness.

ProStage II Airbursts have the added advantage of a three year shelf life as opposed to the *Mix Yourself* variety which has to be used within a few days.

As the range of airbursts is continually expanding, we recommend referring to our price list or website for the airbursts product codes.

Airbursts are available in White and Silver; in Small, Medium, Large and Loud Report, with or without harness drop.

Gold and Silver glitter Airbursts are a twinkling burning effect and not actual glitter.

Loud Report is NOT available with the Gold and Silver Glitters.

Chinese Confetti Airbursts

A specially designed airburst that gives a report followed by a shower of Chinese Confetti that floats slowly to the ground. Designed to be suspended in a lighting truss at least 5 metres from the ground.

Please refer to our price list or website for product codes.

Chinese Confetti Airbursts are available in White, Red, Light Red, Blue, Yellow, Green, Purple, Orange and Multi.

Mixed colours can be made to special order.



DURATION: instant
FALLOUT: cold



www.lemaitreltd.com



Visit our website to view these effects in action.

MK2 Small Starbursts

These are all replacement products for our "old" range of Starbursts. There is more of them, with or without a harness, in amber, blue, green, red and white.

We have also added to the range a gold strobe version, some medium starbursts (in red, green and white), a small and medium shimmer version and also a small and medium flitter version.

Please refer to our price list or website for product codes.



NEW

DURATION: instant
FALLOUT: hot

15ft and 25ft Sparkbursts

An airburst style product that projects small silver branching sparks to a diameter of approximately 15ft and 25ft respectively, with a slight sizzling sound.

Product codes: (a dozen)

PP483: 15' Sparkburst

PP484: 25' Sparkburst

PP483H: 15' Sparkburst on Harness

PP484H: 25' Sparkburst on Harness

(4 harnesses per box only)

Chinese Confetti Sparkburst

The Chinese Confetti Sparkburst is a cross between the current Chinese Confetti Airburst and the 15ft Sparkburst.

The device projects Chinese Confetti to a diameter of approximately 18-20ft whilst at the same time produces a burst of silver branching sparks with a slight sizzling noise to add to the effect.

Please refer to our price list or website for product codes.

The Chinese Confetti Sparkburst are available in Blue, Red, Green, Multi and White.



DURATION: instant
FALLOUT: none

NEW



DURATION: instant
FALLOUT: cold

NEW

Theatrical Flash Pyropot

A brilliant white flash followed by a pure white mushroom cloud of smoke that rises upwards. Visual height approximately 2 metres.

Product codes: (a dozen)

- 1220: Theatrical Flash Pyropot
- 1220A: Small Theatrical Flash Pyropot
- 1220B: Large Theatrical Flash Pyropot
- 1220LR: Theatrical Flash Pyropot (Loud Report)

Pyropots are pre-loaded theatre effects fired by 600mm wires.



Visit our website to view these effects in action.

Smoke Puff Pyropot

A pure white puff of smoke with no flash. Ideal for film or TV work where a flash would cause camera white-out.

Product codes: (a dozen)

- 1222: Smoke Puff Pyropot
- 1222A: Large Smoke Puff Pyropot

DURATION: instant effect

FALLOUT: none

Silver Star Pyropot

Similar to the Theatrical Flash but it combines sparkling silver stars with the flash. Visual height approximately 2 metres.



Visit our website to download our MSDS and COSHH for each of our products.

Glitter Cartridge

A report followed by an explosion of glitter with a height/drop of approximately 5 metres.

Available in Gold, Silver, Multi, Red, Blue or Green, all with wire.

Product codes: (a dozen)

- 1221: Silver Star Pyropot
- 1221B: Large Silver Star Pyropot



DURATION: instant effect
FALLOUT: hot



Visit our website to view these effects in action.

Product codes: (each)

- 1519: Blue Glitter Cartridge
- 1520: Gold Glitter Cartridge
- 1521: Green Glitter Cartridge
- 1522: Multi Glitter Cartridge
- 1523: Red Glitter Cartridge
- 1524: Silver Glitter Cartridge

DURATION: instant effect

FALLOUT: none

Theatrical Maroons

Theatrical Maroons are available in standard plastic, for use in a bomb tank, or in cardboard.

Cardboard Maroons (or non-fragmental) are manufactured in a cardboard casing.

Product codes:

- 1223: Small Maroons (plastic) - 12
- 1224: Medium Maroons (plastic) - 12
- 1225: Large Maroons (plastic) - 6
- PP336: Non-Fragmental Maroons (Small) - 12
- PP337: Non-Fragmental Maroons (Medium) - 12
- PP316: Non-Fragmental Maroons (Large) - 6

DURATION: instant effect

FALLOUT: none

Microdets (Plastic)

A Microdet is like a miniature maroon, also in a plastic casing. It is used to simulate bullet hits on walls or ground, particularly in film and TV.

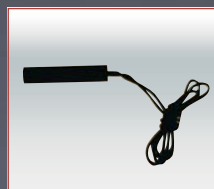
Available in full load.

Product code:

- 1227 (a dozen)

DURATION: instant effect

FALLOUT: none



Visit our website to view all these effects in action.

Cardboard Microdets

A microdet in a cardboard casing used to simulate bullet hits on the body, bursting blood bags etc. Must be used with the appropriate body armour.

Available in full or half load.

Product codes: (a dozen)

- 1227A: Non-Fragmental Microdets
- 1227B: Non-Fragmental Microdets (Half Load)

DURATION: instant effect

FALLOUT: none



Please note:

Maroons are sold for professional entertainment purposes only and should be used with great caution. The user must conduct safety trials prior to use to ascertain the suitability of noise levels for the public.

Confetti Cannon

The **Confetti Cannon** produces a spectacular effect.

It is operated by a pyrotechnic maroon in the base of the cannon, covered with a cardboard wad and up to 2 kilos of confetti or glitter.

On detonation by a **Le Maitre** firing system, there is a loud bang and a huge cloud of confetti is hurled into the air.

The Confetti Cannon is not for use in a confined space, especially near to sound systems.



DURATION: instant effect
FALLOUT: none

The Confetti Cannon is sold for professional purposes only and should be used with great caution.

The height of the effect is variable according to load and must be evaluated by a prior safety test.

SIZE: Length 33cm x Width 33cm x Height 39cm
WEIGHT: 11kg

Product codes:

1104: Confetti Cannon

1700: Cardboard Wad (25cm).

Flash Reports

Flash Reports are used in conjunction with a concussion pot to produce an extremely loud bang.

Flash reports are a modern day alternative to maroons.

PLEASE NOTE that the sizes have been renamed to:

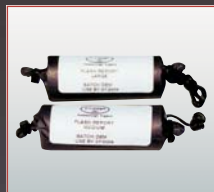
Flash Report No.1 (previously Small)

Flash Report No.2 (previously Medium)

Flash Report No.3 (previously Large)

Flash Report No.4 (previously Arena)

Flash Report No.5 (previously Stadium)



DURATION: instant effect
FALLOUT: none



Read on our website the independent report on Air Overpressure of Le Maitre Flash Reports (Concussion effects) by Dr Rob Farnfield, the Technical Services Manager at Exchem Explosives.

Concussion Pot

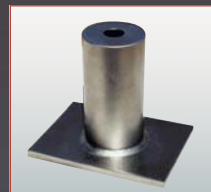
A robust device bored from a solid piece of steel, for firing Flash Reports.

The Concussion Pot is small and readily portable, enabling it to be sited virtually anywhere.

For best results, the Concussion Pot should be flown.

Concussions are **NOT** for use in a confined space or in close proximity to open microphones.

Suitable warning notices must be displayed on all sides.



SIZE: Width 13.5cm x Height 16cm
WEIGHT: 7kg



Visit our website to download our MSDS and COSHH for each of our products.

Product code: 1130

BRAND NEW WEBSITE

We have got a completely revamped website, with a great new design and lots of exciting features. Go and visit it now and enjoy the Le Maitre experience to the full!



www.lemaitreltd.com